

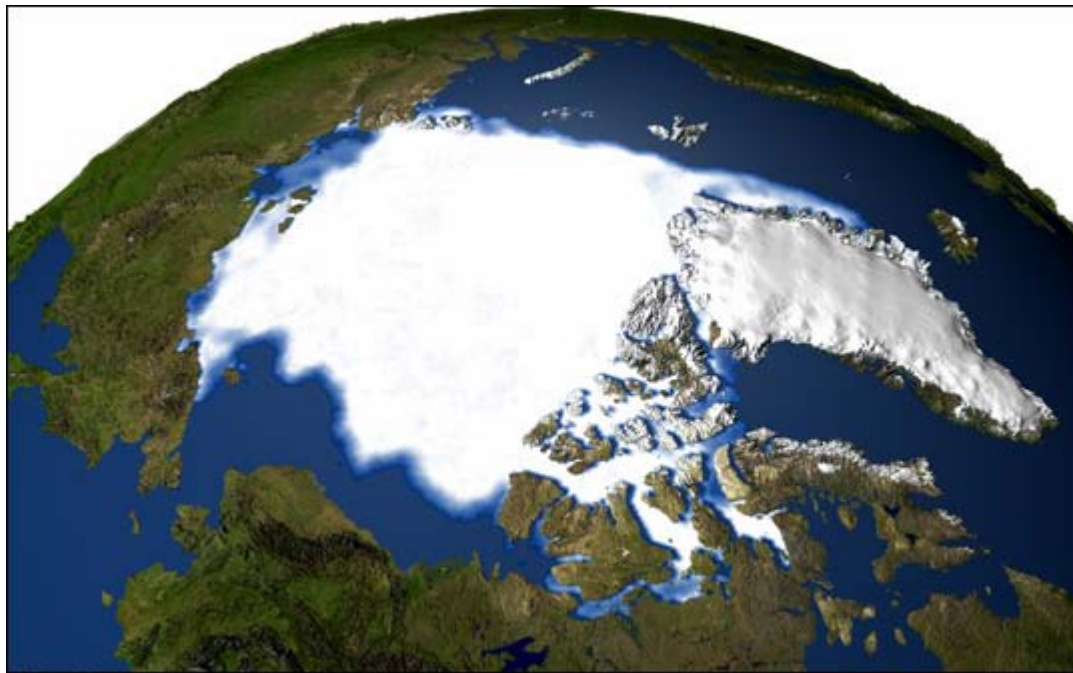
10

1°

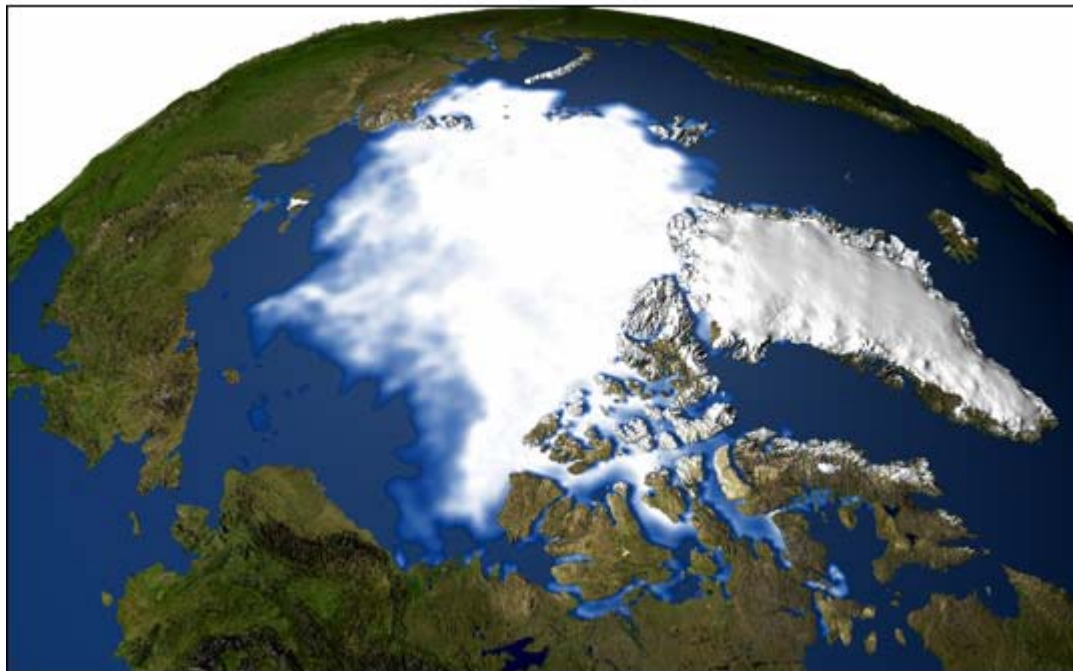


Photo: K. Dewey

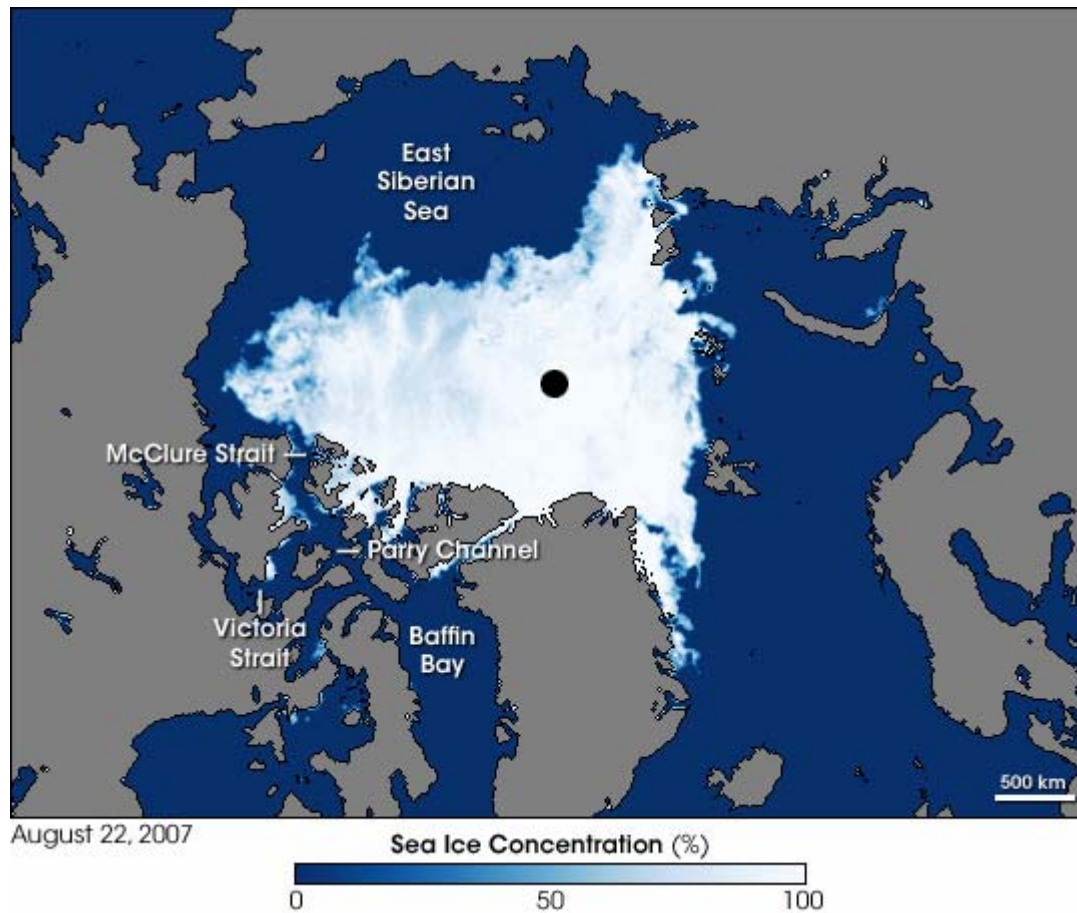
1°



1979 SSMI Composite Data



2003 SSMI Composite Data



NASA image created by Jesse Allen, using data obtained courtesy of the National Snow and Ice Data Center



1°



Photo: Robert Taylor, [polarbearphotography.com](http://polarbearphotography.com)

1º



Image courtesy of: [www.educational-tours.com.au](http://www.educational-tours.com.au)

1º



Photo: <http://www.pifsc.noaa.gov/>



20

2°



2°

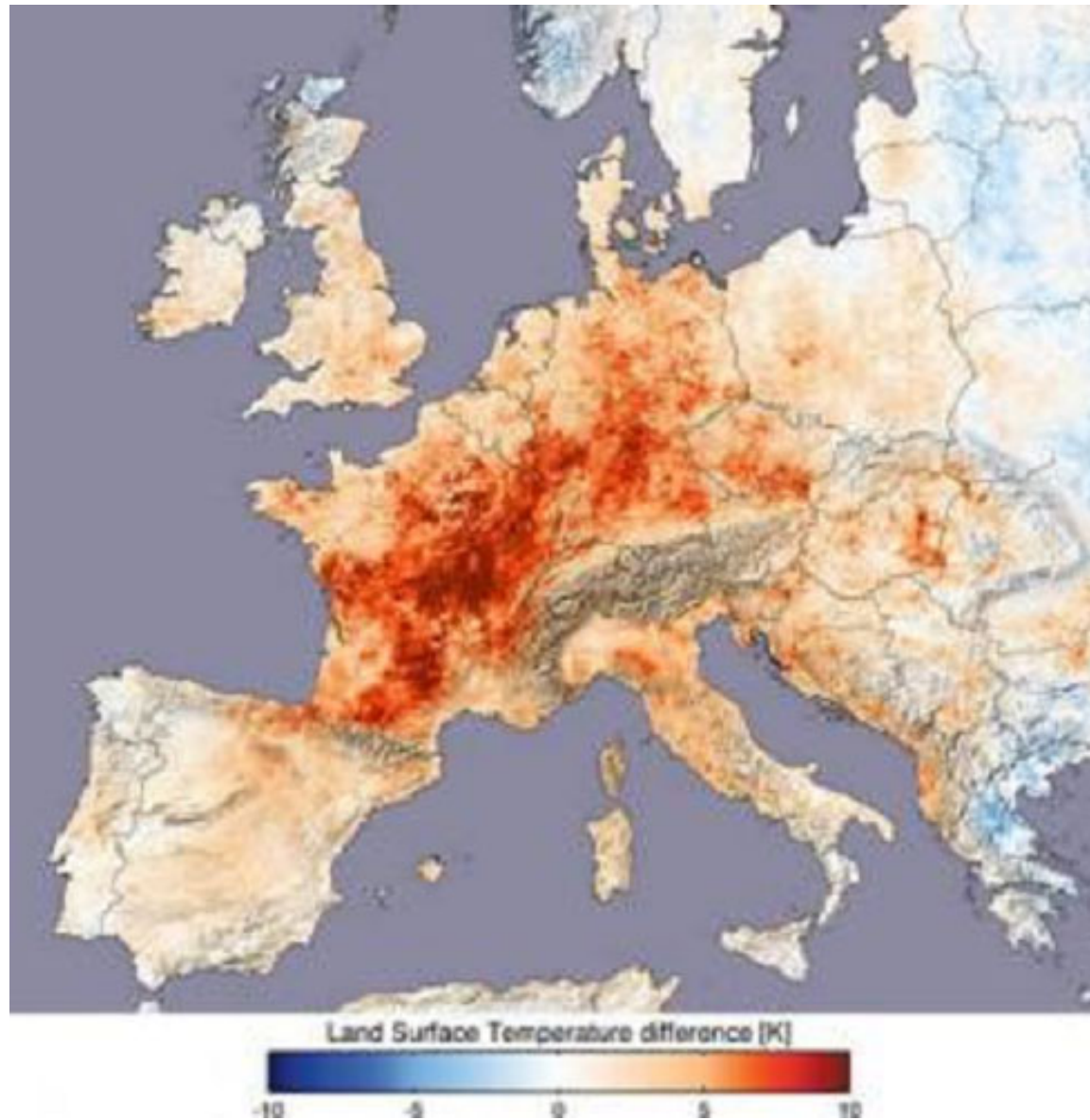
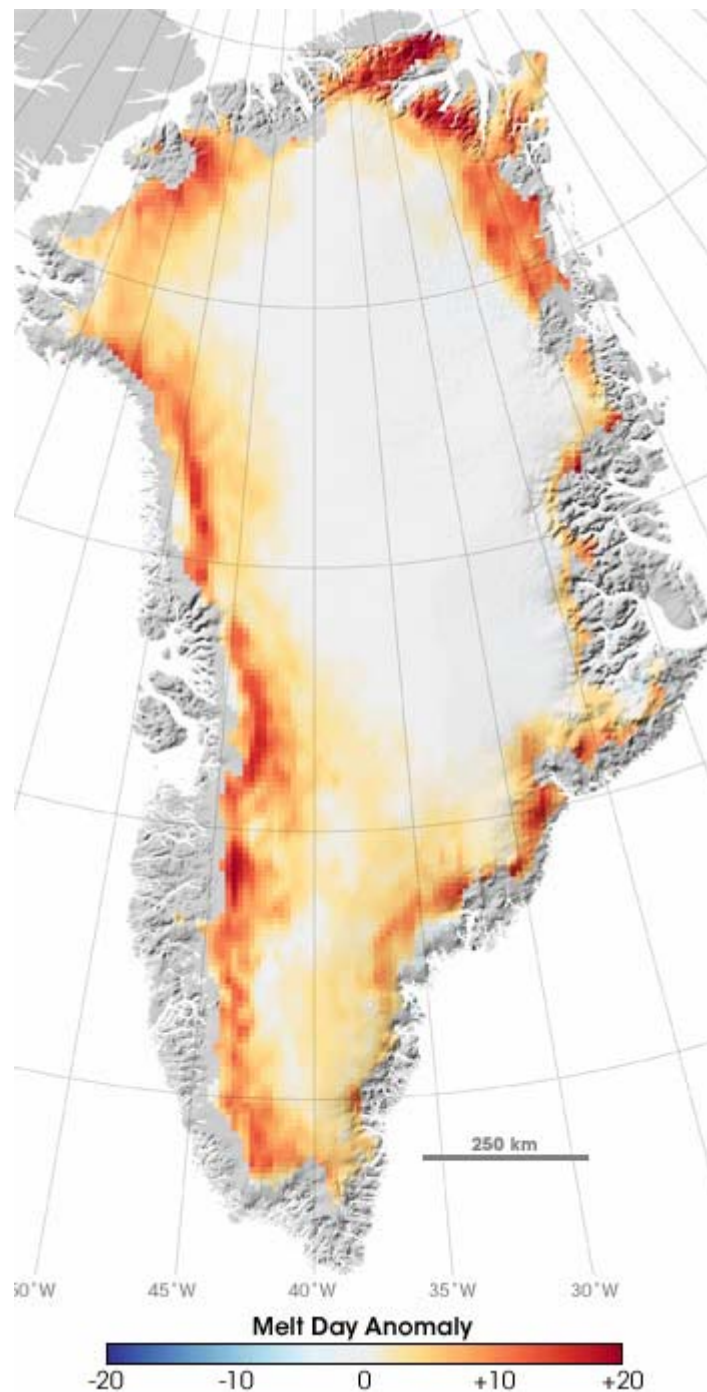


Image: Met Office Hadley Centre for Climate Prediction and Research

Up to 20 additional days of melting occurred in 2005 compared to the average since 1988. (NASA map by Robert Simmon and Marit Jentoft-Nilsen, based on data from Marco Tedesco, GSFC.)



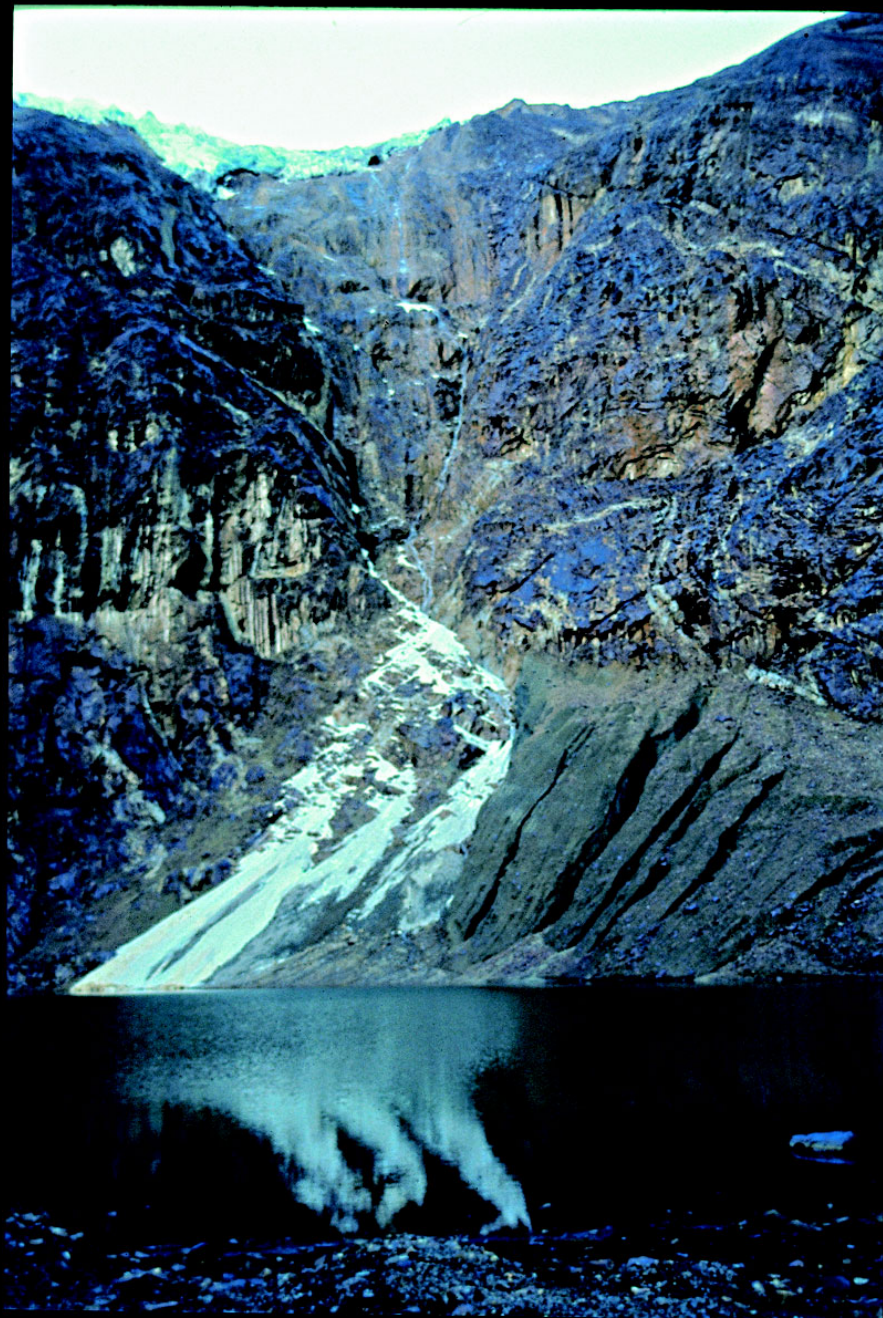


2°



Photo: Bryan Lynas

2°





2°



Photo courtesy of Sam Roberts Photography

2°



Photo: Russ Mittermeier



*Table SPM.5: Characteristics of post-TAR stabilization scenarios [Table TS 2, 3.10]<sup>37</sup>*

[illegible]

30

3°



3°

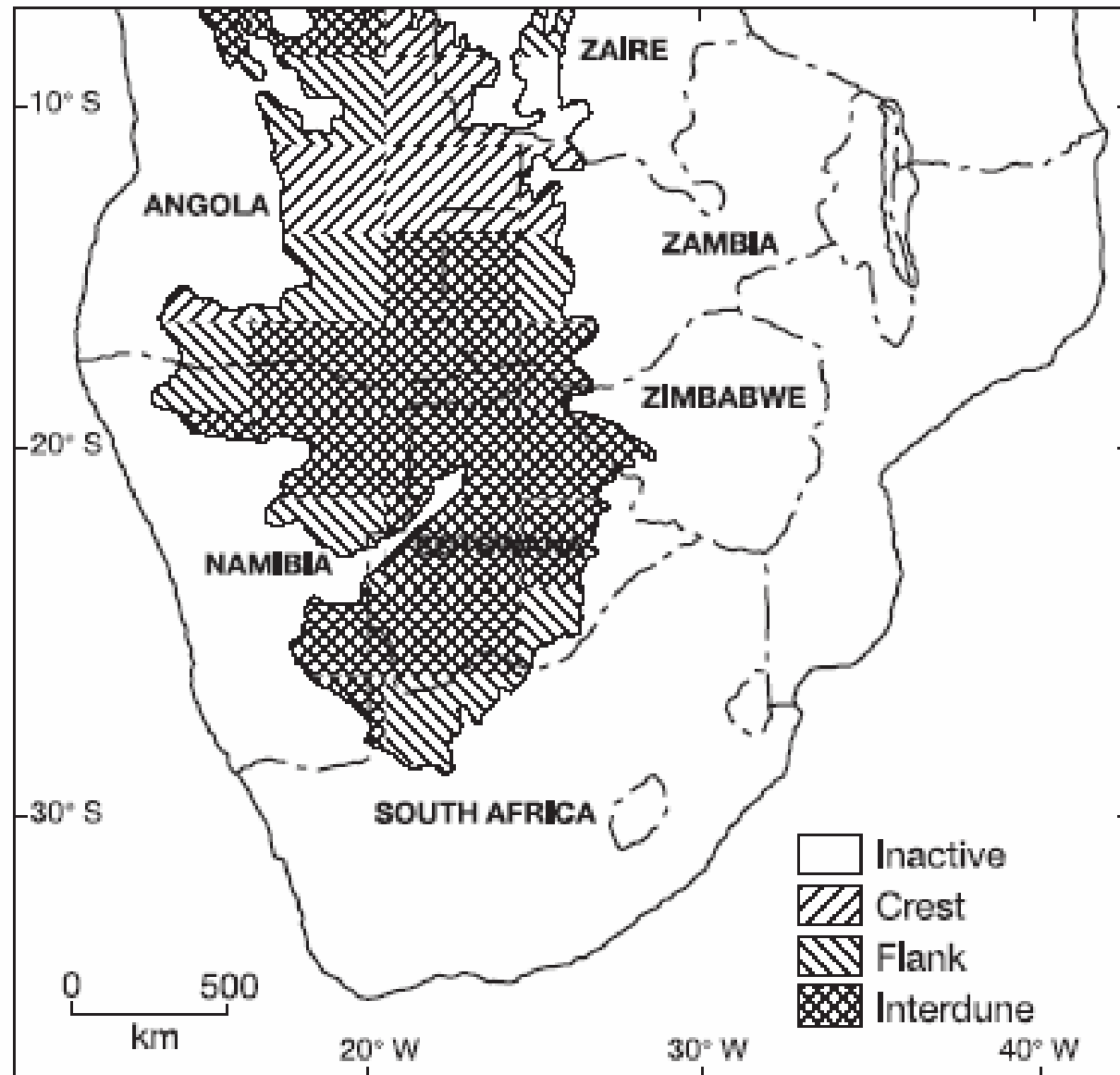


Photo: United States Forest Service



3°

ASO2070



3°



3°



Image: NASA



3°

# The Karakoram Range, Pakistan from EarthKAM



Image: NASA



40

4<sup>o</sup>



4°



4<sup>o</sup>



Photo: Angus McIntyre

4°



Photo: Mark Lynas



50

5°



5°



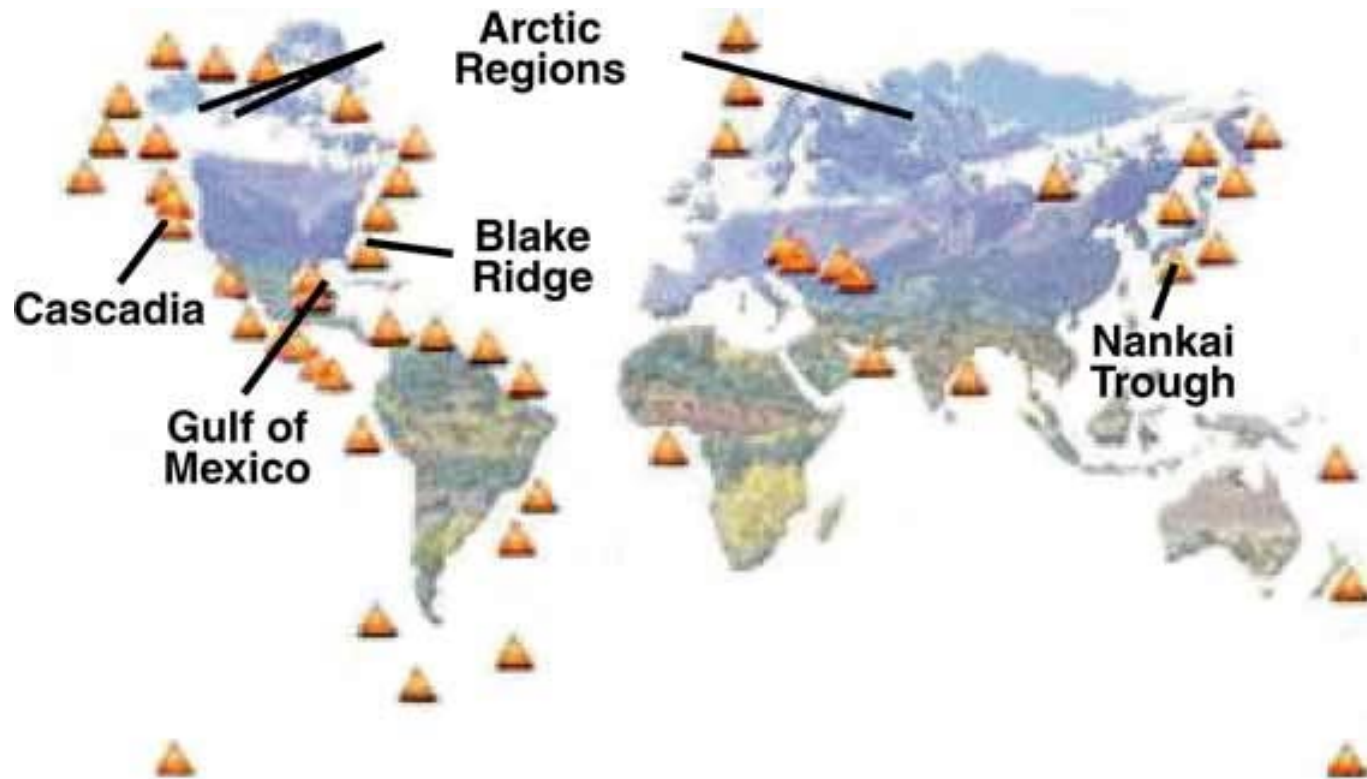
Photo: Dave Evans/EPIC

5°



Photo: Deborah Kelley/GEOMAR

5°



Source: Naval Research Laboratory



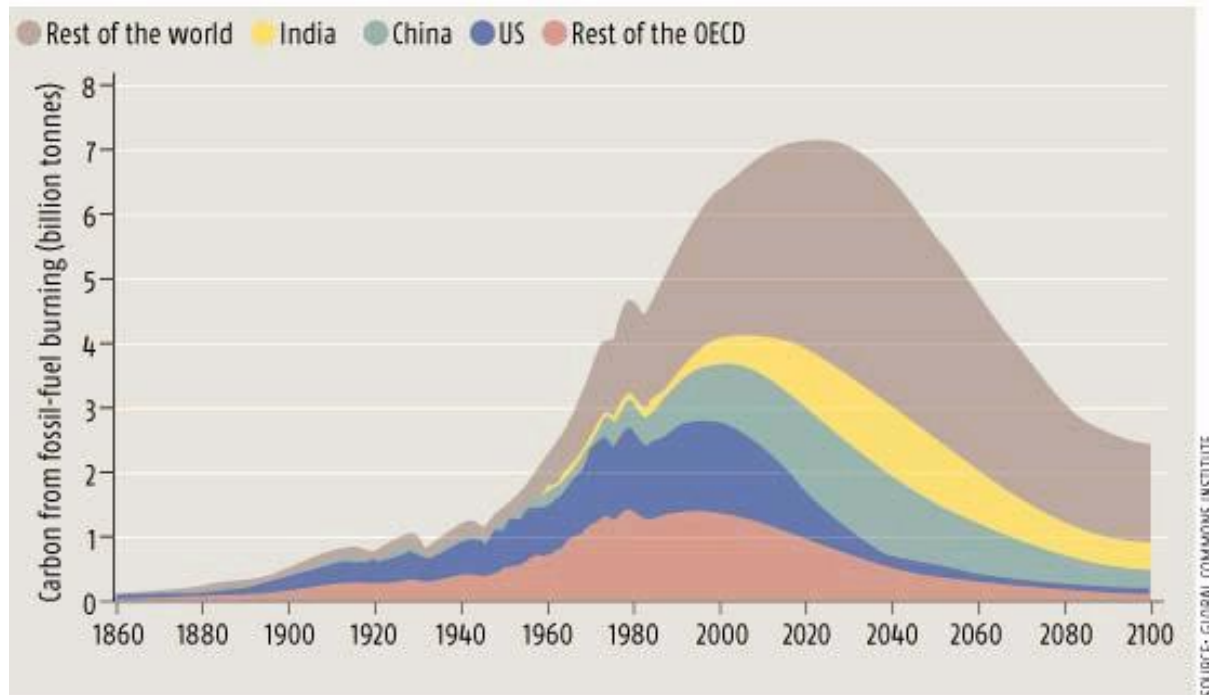
60

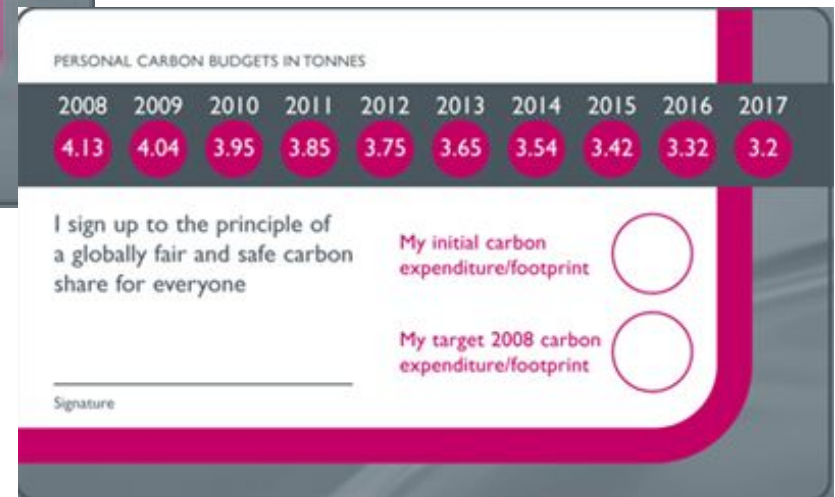


# A 2 degree rescue plan

## CONTRACTION & CONVERGENCE MODEL

Convergence (universal emissions target per person) achieved by 2050.  
Contraction (falling global emissions) completed by 2100





[www.fairsharesfairchoice.com](http://www.fairsharesfairchoice.com)



# The South West 10 year carbon budget



[www.fairsharesfairchoice.com](http://www.fairsharesfairchoice.com)



fair shares, fair choice low carbon movement  
sign-up, now!



[home](#) | [accessibility](#) | [my CO2 account](#) | [print page](#)

[your fair share](#)

[sign up](#)

[champions](#)

[act now](#)

[news](#)

[cool stuff](#)

620

## cool thinking

*Fair Shares, Fair Choice* (FSFC) is a growing movement of people, organisations, businesses and groups (620+ and counting) who are making choices towards living and working within a 'fair and safe' share of carbon. The first step to joining in is [signing up](#) to the principle of 'a globally fair and safe carbon share for everyone' (adding you to the [FSFC supporters](#) list). If everyone lives within a fair carbon share together we can avoid the worst effects of climate change!

Joining the *Fair Shares, Fair Choice* movement offers you:

- ▲ A voice in the climate change debate - [sign up](#) as an FSFC supporter and [share your story](#) on this website
- ▲ A [personal carbon budget](#) (FSFC's 2007 'fair share' = 4.2 tonnes), a carbon footprint calculator and a [team of carbon coaches](#) to support you in low carbon living and working (see below)
- ▲ Opportunities and ideas for your business, organisation, community group or school (including savings on money and resources)
- ▲ The buzz of taking positive action on climate change!

Going low-carb is still new for many of us. But keep your cool, our virtual carbon coaches are here to help! (see below)

**act now!**  
choose your carbon coach

add your name to the movement!

**sign up**

## News

Sustainable development Champions, Sustainability South West, are at The Mall, Galleries in Bristol this week giving shoppers u ...  
[click to read more...](#)



**Alan + Anita**  
your workplace coaches



**Beth**  
your lifestyle coach



**Colin + Curtis**  
your community coaches



[www.fairsharesfairchoice.com](http://www.fairsharesfairchoice.com)

# Act now - Choose your carbon coach!

**Alan + Anita  
your workplace  
coaches**



Does your business or organisation want to benefit from going low carb? Alan and Anita are on hand with specialist advice and resources.

**Beth  
your lifestyle  
coach**



Lifestyle coach Beth will help you get your personal carbon spending under control with carb-busting challenges and tips!

**Colin + Curtis  
your community  
coaches**



Calling all community groups and schools! With Colin and Curtis's help your group can take on the low carbon challenge together.



# *Fair Shares, Fair Choice* celebrities and VIP's



**Clockwise from top left:** Jonathon Porritt - Chair of the Sustainable Development Commission; Mark Lynas – author and climate campaigner; Tim Smit - Chief Executive of the Eden Project; Lucy Stansfield - Young Climate Change Champion for the SW; John Grimshaw - Chief Executive of Sustrans; Michael Caines - chef and businessman; Aubrey Meyer - founder of 'Contraction & Convergence'



**Sign up  
to *Fair Shares,*  
*Fair Choice*  
and help polar bears  
to sleep more easily**



[www.fairsharesfairchoice.com](http://www.fairsharesfairchoice.com)