

SW Regional Improvement and Efficiency Partnership

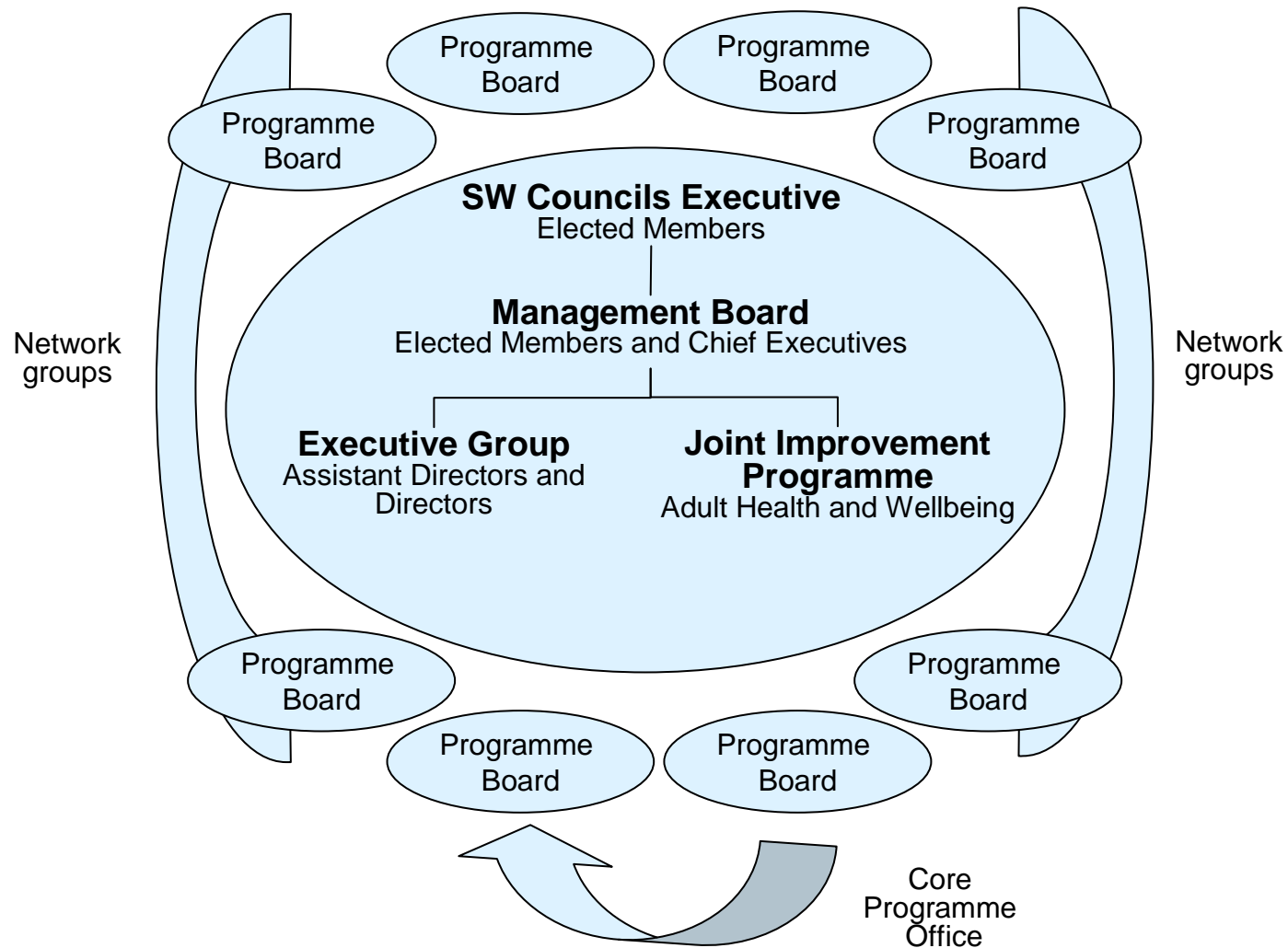


Helen Elliott
Programme Manager – Climate Change
South West Regional Improvement and Efficiency
Partnership



SOUTH WEST
REGIONAL IMPROVEMENT
& EFFICIENCY PARTNERSHIP

Governance and Accountability



Development of the Delivery Plan

Overall timeline:

- March 07 – July 08: Development of regional Climate Change Action Plan – led by SWRA
- *May 08 – Sept 08: Development of SW CC RIEP Delivery Plan – led by SWRA*
- **Governance:**
- June 07 – 1st meeting of CCAP Core Group – CE & Dir of RA, Dir EA, senior off - GOSW, RDA
- Sept 07 – 1st meeting of Members CCAP Task (& Finish !) Group (Chaired by a SEEP)
- *Sept/Oct 08 – formation of CC RIEP Programme Board based on Core Group plus others*
- **Stakeholder involvement:**
- ‘Soundings e-Group’ – key regional and expert stakeholders
- Dec 07 – Stakeholder workshops (Existing activity, Knowledge / activity gaps, barriers, solutions)
- Mitigation focus groups for Existing domestic, Existing non-domestic, Public Sector (mostly LAs), Transport, New Build (Approx 100 people)
- 1 day conference on Adaptation (co-led by SWRA / SWCCIP) (Approx 100 people)
- Mar 08 - Members workshop (Members, SEEPs, and some LA Officers)
- *May 08 - CCAP & RIEP LA workshop*
- June 08 – final drafting session with key regional partners
- formal e-consultation on (nearly) final draft
- *informal consultation on early draft of CC RIEP Delivery Plan*
- *July 08 - meeting with key delivery partners (RegenSW, EST, GOSW, SWEEG) on projects*
- July 08 – adoption of CCAP by SWRA
- Sept 08 – launch of Exec Summary version / SW CCAP by all regional partners
 - - CC RIEP Delivery Plan agreed by SW RIEP Executive

Goals

1. Reduction in Local Authority Estate Carbon Emissions (**NI 185**)

2. Reduction in community per capita carbon emissions (**NI186**) & in Fuel Poverty (NI187)

3. Increase in Local Authority's capacity to enable adaptation to Climate Change (**NI188**)

Programme Outcomes

1. Local authorities will understand the steps to achieving best practice in all areas of their climate change work and the implications for expenditure and activity in all service areas.

2. Local authorities will have improved their skills and maximised their capacity to tackle climate change in all areas of their work.

3. Local authorities will know how to develop and use a robust evidence base to underpin all climate change activity and policy decisions.

4. Local authorities will understand how to lead, support, and communicate clearly with their partners and their community on climate change activity.

Programme Outputs

1. IMPROVED STRATEGIC APPROACH
 New or improved ways of approaching leadership & structures to ensure LAs have a well co-ordinated & effective approach to climate change activity:
 • eg. Self assessment tool developed and rolled out to LAs to provide 'road map' of next steps;
 • eg. Guidance for best practice on LAA leadership and setting sub-regional targets for climate change.

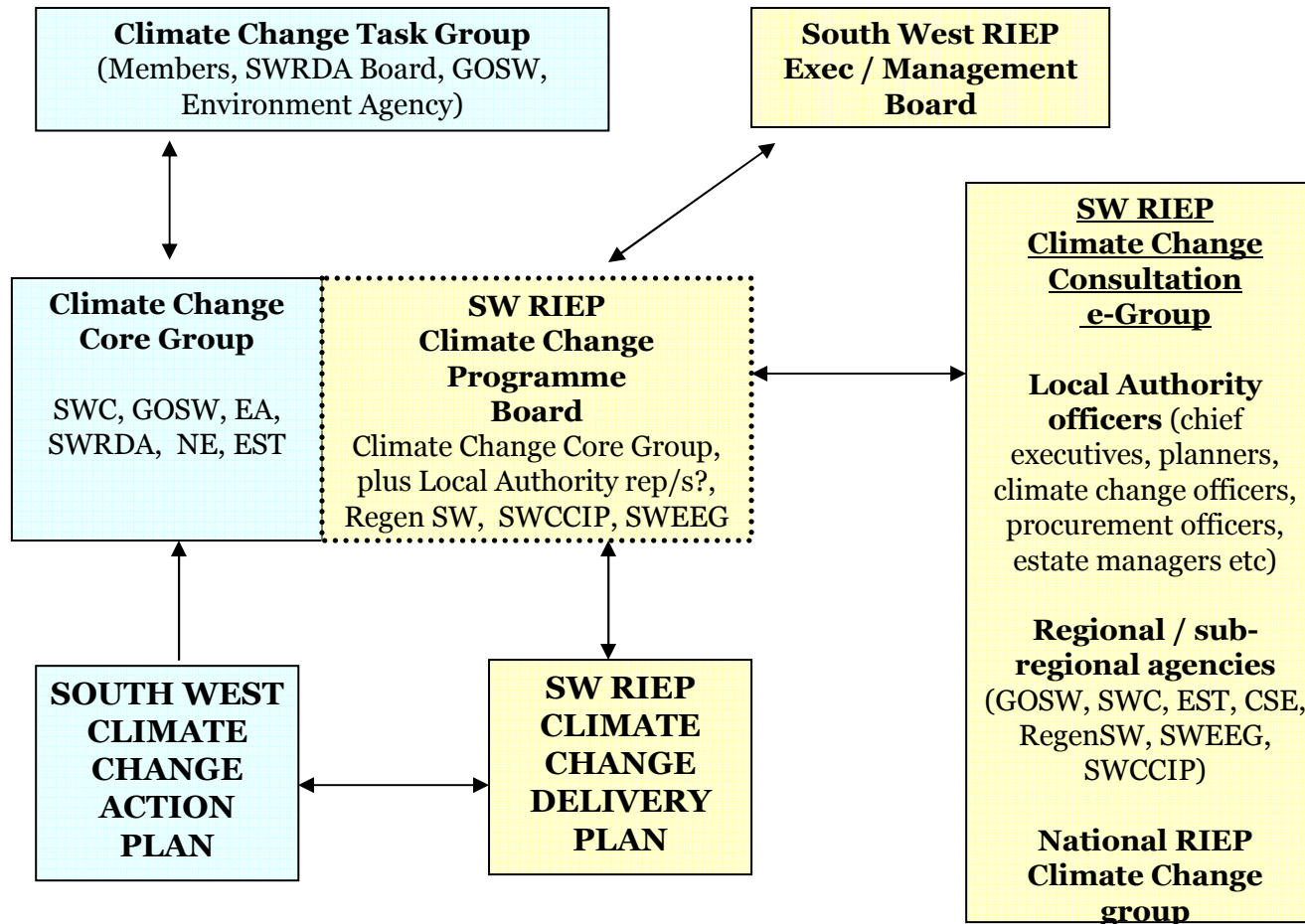
2. REGIONAL COLLABORATION TO ACHIEVE BEST PRACTICE and NEW SKILLS
 Support for professional and best practice networks, improved knowledge and skills:
 • eg. Regional partnership approach to Peer Reviews and networks based on NI 185 / 186 / 187 / 188 work
 • eg. Support for LAs to deliver new policies eg PPS1 on Planning and Climate Change

3. EXPERTISE ON EVIDENCE BASE DEVELOPMENT & USE
 Developing models and information systems to support improved evidence base work in climate change activities and policy development:
 • eg. support for development and use of carbon accounting tools

4. CLEARER COMMUNICATION of ISSUES & PRIORITIES ON CLIMATE CHANGE ACTION
 Using new and existing means to simplify the multitude of communications and priorities on climate change within and between Local Authorities and their communities:
 • eg. Guidance on community engagement on climate change activity

NIs that are priorities for 3 LAAs or more in the South West are highlighted in **bold**

Climate Change Programme Board & relationship to CCAP





RIEP Climate Change budget

- Total budget £360k (£270k from CLG/DEFRA)
- 2008/09 = £40k – probably c/f 09/10
- 2009/10 £160k
- 2010/11 £160k



NI 186 Examples

- Project Officer.
 - Before/after research and evaluation for all initiatives and where possible detailed numeric evaluations of impact of local actions and initiatives.
 - Provide licences to the Carbon Descender software.
 - Provide a data and analysis support service to all LAA areas.
 - Providing a network of technical experts to advise and assist on action development and delivery.

Next Steps

- Programme Board 27.3.09
- Approval of Project Bids.
- Ideas/suggestions for NI 188?